

Infrared Imaging Radiometer

You Will Save
Money and...

Prevent
Downtime

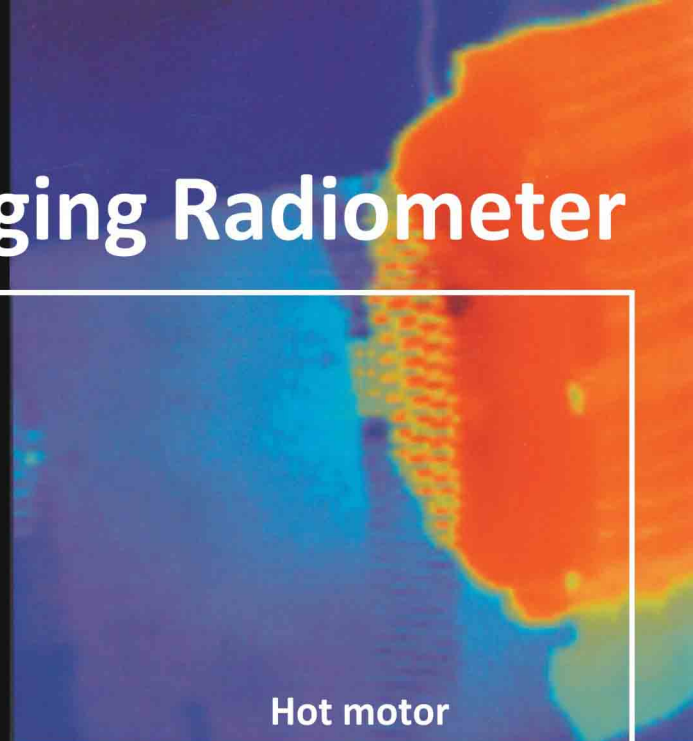
Maintain
Quality

Reduce
Energy Costs

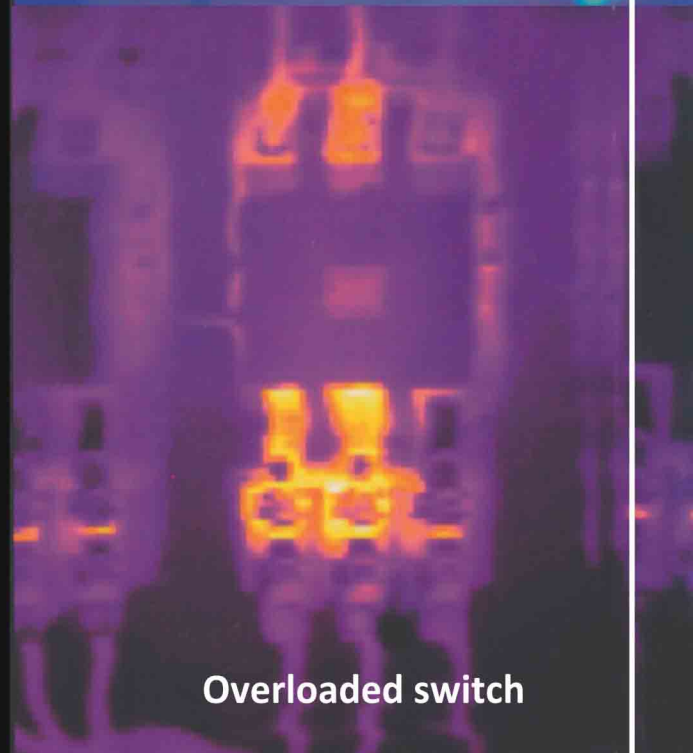
With Proven,
Affordable
Infrared Technology



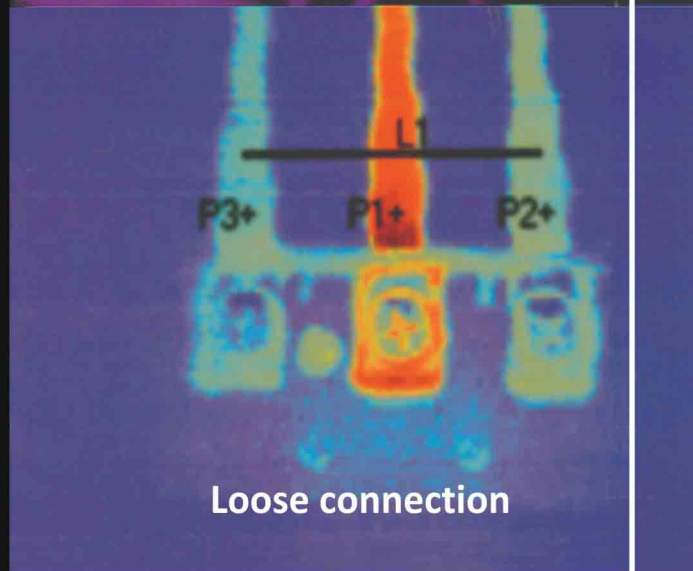
INFRARED
SOLUTIONS INC.



Hot motor



Overloaded switch

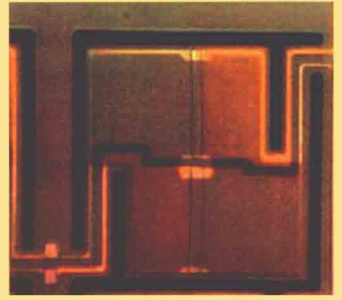


Loose connection

Proven technology will save you money

Rugged and low maintenance!

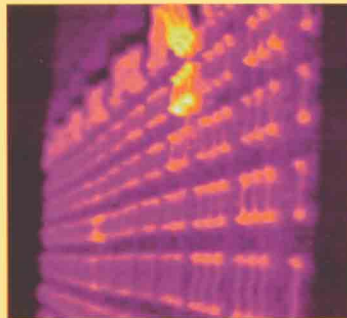
Our exclusive technology utilizes the Honeywell thermoelectric detector fabricated by silicon microstructure processing. This revolutionary technology operates at room temperature, drastically reducing the camera operating costs. By its very nature, this sensor is simple, yet more robust than other infrared sensors. It has proven to be extremely accurate and durable, demonstrating superior results in the 8 to 14 m wavelength



Exclusive, patented thermal sensor allows accurate temperature measurement at an affordable cost!

Prevent Downtime

The IR Snapshot™ identified bad battery cells in an air traffic control emergency backup system that could have resulted in catastrophic failure.



Maintain Quality

Improper and uneven temperature adjustment of Yankee dryer diagnosed and corrected to maintain paper quality.

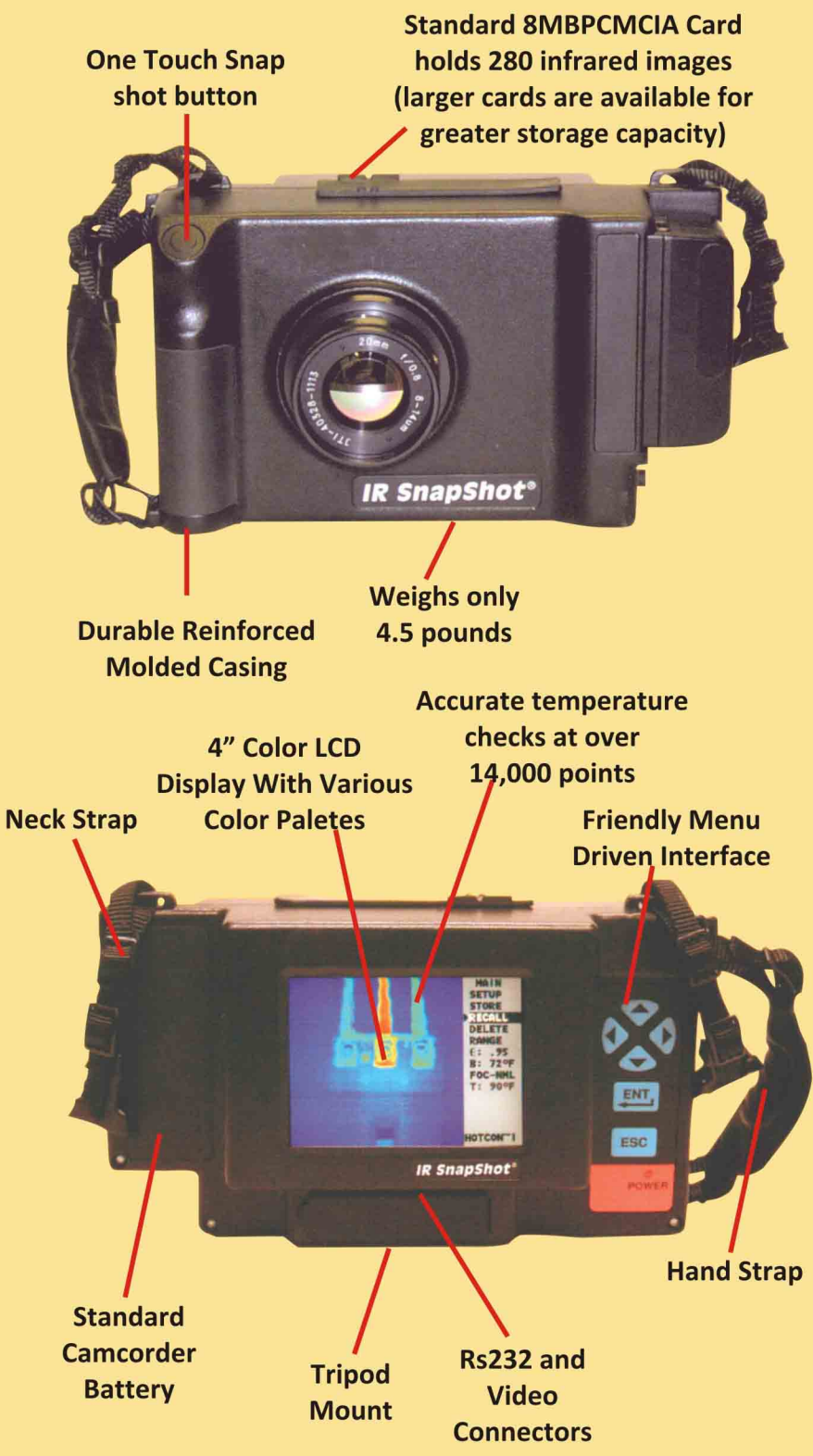
Reduce Energy Costs

Infrared imaging helps ensure wire insulation and electric load balances are proper to maximize efficiency energy use.



Every day, in every industry the IR Snapshot™ is successfully being put to the test...

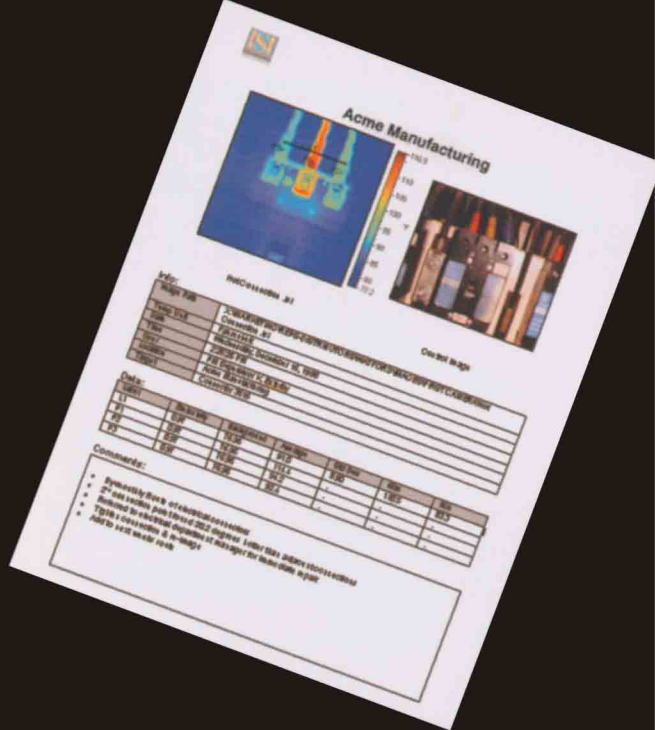
The Most Cost-Effective Infrared Camera Available Today



Applications

- Predictive and preventive maintenance of mechanical and electrical distribution systems
- Surveying substation, switchgear & transformers
- Locating faulty electrical connections
- Monitoring motors and rotating equipment
- Locating refractory breakdown
- Inspecting pipe and vessel insulation
- Checking steam traps and valves
- Non Destructive testing
- Identifying wet insulation on rooftops
- Monitoring vessels for fluid leakage
- Product inspection
- Research and development (R&D)
- Perimeter surveillance

Automatically generate reports!
 The camera comes with a comprehensive user friendly Windows and NT compatible software package that allows the user to analyze images and easily generate custom reports in a Microsoft Word format.



The portable IR SnapShot™ - Simplicity at its best!



Easy to use-just and shoot.
No extensive training required.

SPECIFICATIONS

Detector :	120 element linear array of uncooled thermoelectric detectors, 50 micrometer square pixels
System Dynamic Range :	12 bits usable with digitizing resolution of 16 bits.
FOV :	17.2° horizontal and 17.2° vertical
Lens :	Germanium 20mm, F/0.8, focus 10" to infinity
Spectral Band :	8 micrometer to 12 micrometer, anti-reflection coated Germanium optics
NETD :	<0.35°C @ 30°C
Accuracy :	2°C or 2% of reading
Measurement Temperatures :	0 to 350°C (custom range available)
Operating Temperature :	0 to 40°C
Power Input :	NP-98 compatible camcorder battery, 3AH
Image Scan Time :	<1.5 seconds
Battery Operating Time :	>60 minutes with 3AH battery, up to 12 hours with optional 14.4 AH battery belt
Image Storage :	4.0 Megabyte ATA Flash PC Card stores 144 images
Communication :	RS-232, 300 to 115K band selectable
Display :	102mm/4.0" active matrix color LCD, high luminance
Video Output :	Selectable NTSC/PAL
Functions :	Focus, snap, store, recall, hot spot, histogram and setup menu
Setup Menu Options :	Emissivity, background temperature, temperature units, color Palette, Auto scale, and fixed ranges, focus width, time, date, RS-232 baud rate, NTSC/PAL select
Size :	240 x 100 x 130mm/9.4 x 3.9 x 5.1 inches, L x W x H, not including lens
Weight :	<2.0Kg/4.4 lbs with lens and battery
Standard Accessories :	3 AH camcorder battery, battery charger, video cable, padded neck strap, manual, Snap View™ image analysis tool Windows 95/98/NT, 4.0 Megabyte ATA flash card.
Options :	IR SnapView™ Pro, 35° FOV lens, AC power adapter, 14.4 AHbattery belt

Note : Specifications and Features will vary with application. The above are established and validated during design, but are not to be construed as test criteria for every product. Due to endee's commitment to research, design and product improvement, specifications are subject to change without notice.



ENDEE ENGINEERS PVT. LTD.

Office : 25/N, Laxmi Industrial Estate, Link Road, Andheri (W), Mumbai - 400 053.
Tel. : 6692 3081 / 82 | Fax : 2637 5973
Email : sales@endee-engineers.com | info@endee-engineers.com
Website : www.endee-engineers.com

